

Hours:

Brunch/Cafe		Dinner	
Monday, Wednesday, Thursday, Friday	8am-3pm	Wednesday-Saturday <i>Kitchen closes at 9pm</i>	5pm-11pm
Saturday & Sunday	9am-3pm	Sunday <i>Kitchen closes at 8pm</i>	5pm-9pm

Paul Roden

In an information-saturated world, an overstimulated mind escapes through memory and nature, translating visions into the bright and bold currency of our attention spans. The fruits of this labor are a playful yet somber pop style over classical structure. This life in the tree stand catalogs reminders of our natural world, with awe at its beauty and concern for the human impact upon it :)

WEBSITE: www.paulrodenstudio.com

SOCIAL: [@misterrodensneighborhood](https://www.instagram.com/misterrodensneighborhood)

CURATOR: Chelsea Schilling

ART INQUIRIES: cschilling3@gmail.com

[@chelzeabutts](https://www.instagram.com/chelzeabutts)

Earthly Hiatus

As we enter our cold, grey season, use these vibrant memories as reminders of warmer days.

CATALOG



Barge

spraypaint & acrylic on panel 24" x 54"

\$2500



Cascade

pen & marker on paper, 6" x 6"

\$280 (framed)



Cove

spraypaint & acrylic on panel, 24" x 32"

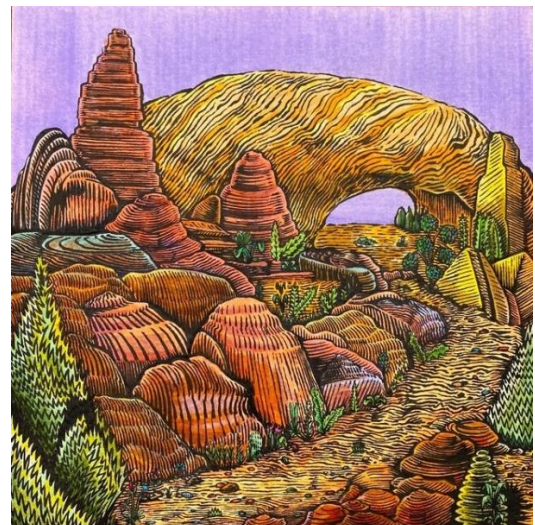
\$1200



Cascade

acrylic on panel, 12" x 12"

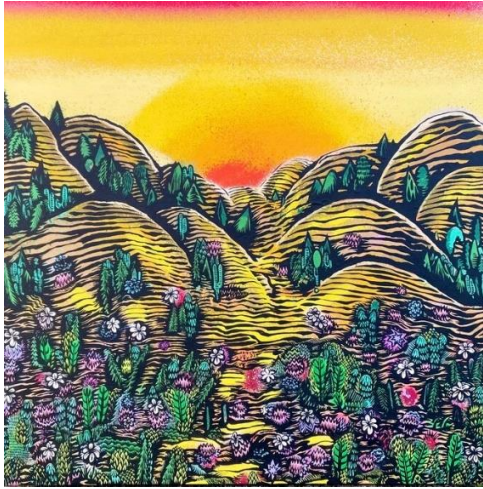
\$450



Desert Arch

pen & marker on paper, 6"x6"

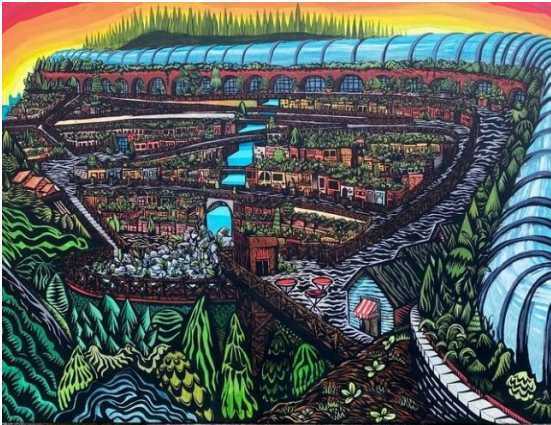
\$280 (framed)



Desert Flowers
spraypaint & acrylic on panel 18"x18"
\$600



Streambed *photo not updated*
spraypaint & acrylic on panel 48"x48"
\$5000



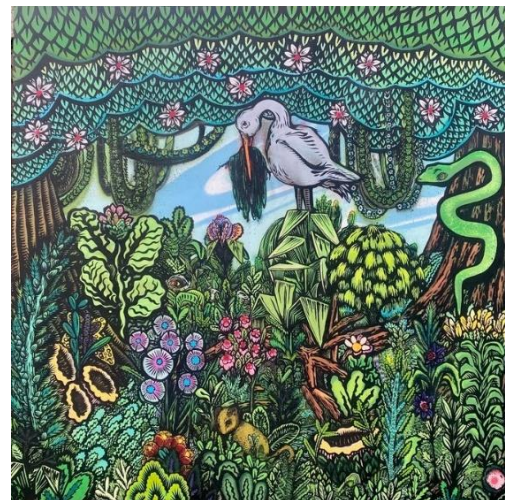
Pittview
acrylic on panel, 24"x32"
\$1500



Swamp
pen & marker on paper, 6"x6"
\$280 (framed)



Rock Mound
pen & marker on paper, 6"x6"
\$250 (framed)



Swamp
spraypaint & acrylic on panel, 40"x40"
\$3000